

Series VT6DRM * - B45 - 1 R 00 - A 1 0 - A 1 *

Y - Metric port connection, Omit for UNC

Cam ring for
 Volumetric displacement cm³/rev (in³/rev)
 * B14/R14 = 47.6 (2.90) B35/R35 = 110.0 (6.77)
 B17/R17 = 58.2 (3.55) B38/R38 = 120.3 (7.34)
 B20/R20 = 66.0 (4.03) B42/R42 = 136.0 (8.30)
 B24/R24 = 79.5 (4.85) B45/R45 = 145.7 (8.89)
 B28/R28 = 89.7 (5.47) B50/R50 = 158.0 (9.64)
 B31/R31 = 98.3 (6.00) B61/R61 = 190.5 (11.62)

*'B' - for Mobile
 'R' - for Mobile - spring assisted

Type of Shaft
 1 - Keyed (SAE C)
 2 - Keyed (SAE CC)
 3 - Splined (SAE C)
 5 - Keyed (no SAE)

Direction of rotation (view on shaft end)
 R - Clockwise
 L - Counter-clockwise

Porting combination

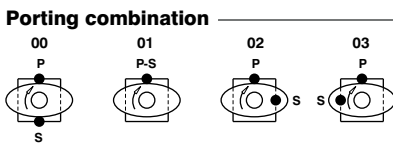
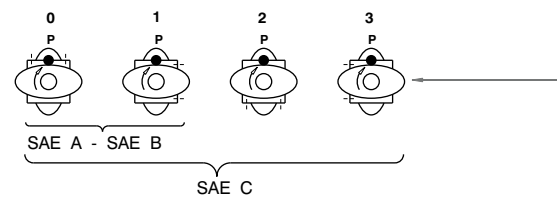
Modifications
Seal class
 1 - S1 (for mineral oil)
 4 - S4 (for fire resistant fluids)
 5 - S5 (for mineral oil and fire resistant fluids)

Design letter

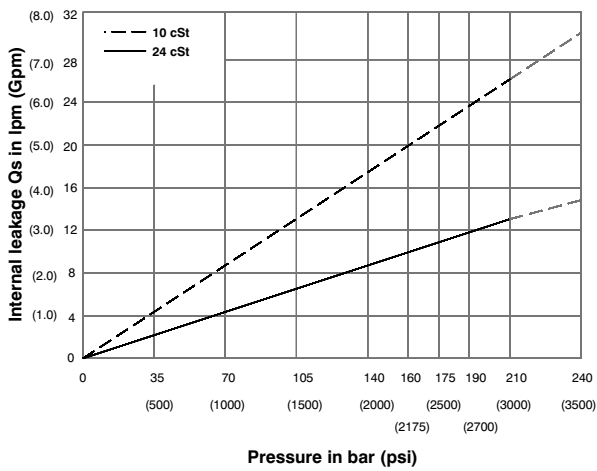
Porting adapter

Coupling
 1 - SAE A 4 - SAE C
 2 - SAE B 5 - SAE J498b
 3 - SAE BB 16/32-11 teeth

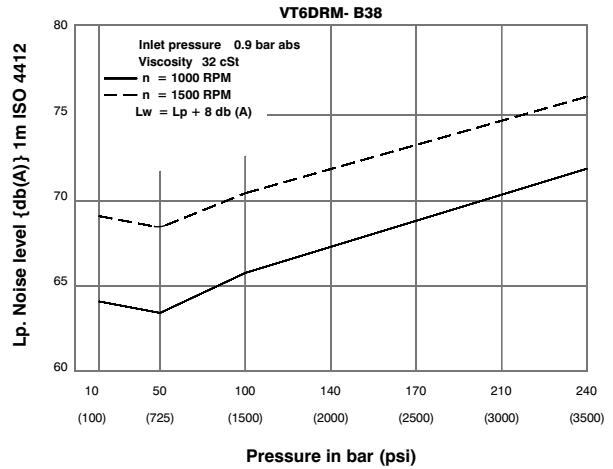
Adapter
 0 - None B - SAE B
 A - SAE A C - SAE C



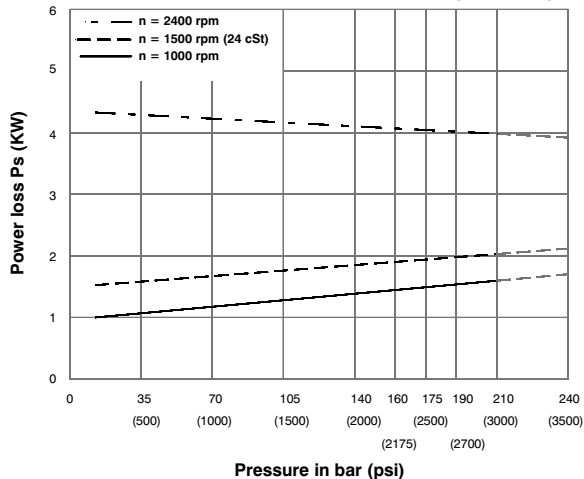
INTERNAL LEAKAGE (TYPICAL)



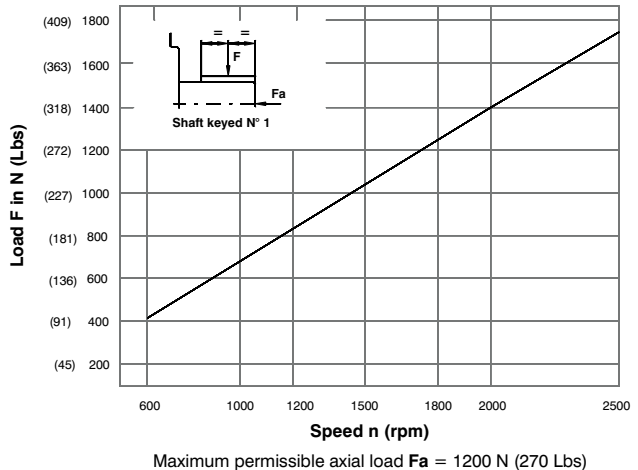
NOISE LEVEL (TYPICAL)



HYDROMECHANICAL POWER LOSS (TYPICAL)

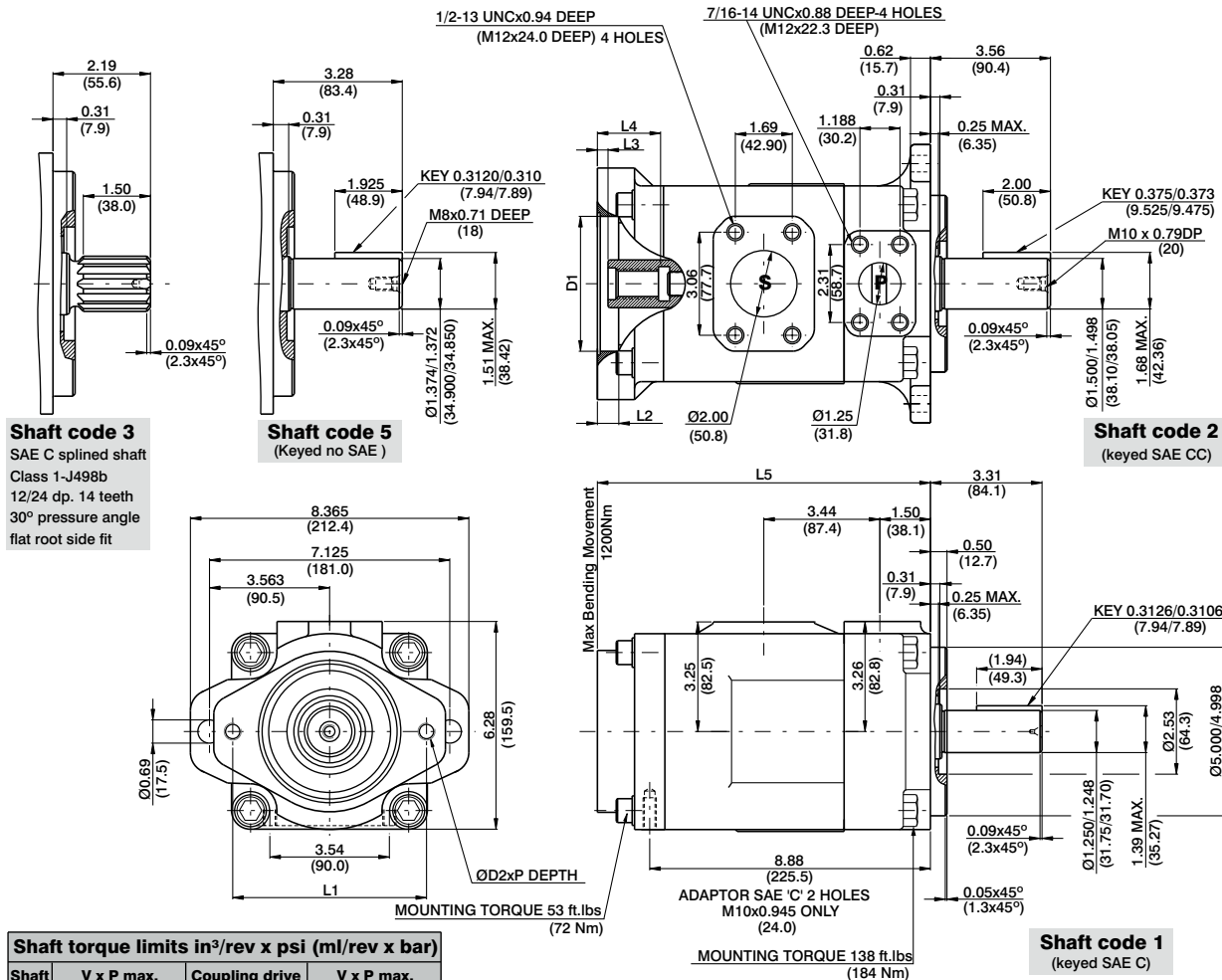


PERMISSIBLE RADIAL LOAD



Maximum permissible axial load Fa = 1200 N (270 Lbs)

DRIVE TRAIN VANE PUMP VT6DRM



Shaft torque limits in³/rev x psi (ml/rev x bar)

Shaft	V x P max.	Coupling drive	V x P max.
1	38300 (43240)	SAE"A"	9743 (11000)
2	58491 (66036)	SAE"B"	18246 (20600)
3	54207 (61200)	SAE"BB"	28937 (32670)
5	49247 (55600)	SAE"C"	33118 (37390)
		SAE"11teeth"	14039 (15850)

Adaptor	D1	D2	P	L1	L2	L3	L4	L5
SAE "A"	3.25 (82.60)	M10	0.94 (24)	4.19 (106.4)	0.43 (11)	0.31 (7.9)	1.26 (32)	9.33 (237)
SAE "B"	4.00 (101.65)	M12	1.10 (28)	5.75 (146.0)	0.63 (16)	0.31 (7.9)	1.81 (46)	9.88 (251)
SAE "C"	5.00 (127.10)	M16	-	7.12 (181.0)	0.63 (16)	0.31 (7.9)	2.20 (56)	10.27 (261)

Adaptor	SAE "A"			SAE "B"		SAE "C"
	SAE A	SAE (11teeth)	SAE B	SAE B	SAE BB	SAE C
Number of teeth	9	11	13	13	15	14
Pitch	16/32	16/32	16/32	16/32	16/32	12/24
Pressure angle	30°	30°	30°	30°	30°	30°
Major dia.(min)	0.625 (15.875)	0.750 (19.05)	0.875 (22.225)	0.875 (22.225)	1.00 (25.40)	1.250 (31.75)
Minor dia.(min)	0.500 (12.70)	0.630 (16.00)	0.753 (19.134)	0.753 (19.134)	0.877 (22.268)	1.086 (27.585)

OPERATING CHARACTERISTICS - TYPICAL (24 cST)

Pressure port	Series	Volumetric		Flow q & n = 1500 rpm						Input power p & n = 1500 rpm					
		Displacement Vp		p = 0 bar (0 psi)		p = 140 bar (2000 psi)		p = 240 bar (3500 psi)		p = 7 bar (100 psi)		p = 140 bar (2000 psi)		p = 240 bar (3500 psi)	
		in ³ /rev	cm ³ /rev	gpm	lpm	gpm	lpm	gpm	lpm	hp	kw	hp	kw	hp	kw
VT6DRM	B14	2.90	47.6	18.88	71.4	16.42	62.1	14.78	55.9	3.08	2.3	24.81	18.5	41.03	30.6
	B17	3.55	58.2	23.1	87.3	20.6	78.0	18.99	71.8	3.35	2.5	29.77	22.2	49.62	37.0
	B20	4.00	66.0	26.19	99.0	23.73	89.7	22.08	83.5	3.75	2.8	33.39	24.9	55.92	41.7
	B24	4.80	79.5	31.56	119.3	29.10	110.0	27.46	103.8	4.02	3.0	39.69	29.6	66.78	49.8
	B28	5.50	89.7	35.58	134.5	33.12	125.2	31.48	119.0	4.29	3.2	44.52	33.2	74.96	55.9
	B31	6.00	98.3	39.00	147.5	36.53	138.1	34.89	131.9	4.42	3.3	48.54	36.2	81.80	61.0
	B35	6.80	111.0	44.04	166.5	41.58	157.2	39.94	151.0	4.69	3.5	54.58	40.7	92.13	68.7
	B38	7.30	120.3	47.72	180.4	45.26	171.1	43.62	164.9	4.96	3.7	58.87	43.9	99.64	74.3
	B42 ¹⁾	8.30	136.0	53.96	204.0	51.50	194.7	49.86	188.5	5.36	4.0	66.25	49.4	112.24	83.7
	B45 ¹⁾	8.89	145.7	57.80	218.5	55.34	209.2	53.70	203.0	5.50	4.1	70.81	52.8	120.02	89.5
	B50 ^{1,2)}	9.64	158.0	62.69	237.0	60.23	227.7	59.25	224.0	5.90	4.4	76.44	57.0	113.98	85.0
	B61 ^{1,3)}	11.62	190.5	76.25	285.7	73.54	278.0	--	--	6.16	4.6	81.26	60.6	--	--

1) B42-B45-B50-B61=2200 RPM max. 2) B50=210 bar (3000 psi) max. 3) B61 = 120 bar (1740 psi) max. int. B61 = 80 bar (1160 psi) cont.

Note: Product details are liable to change without any notice