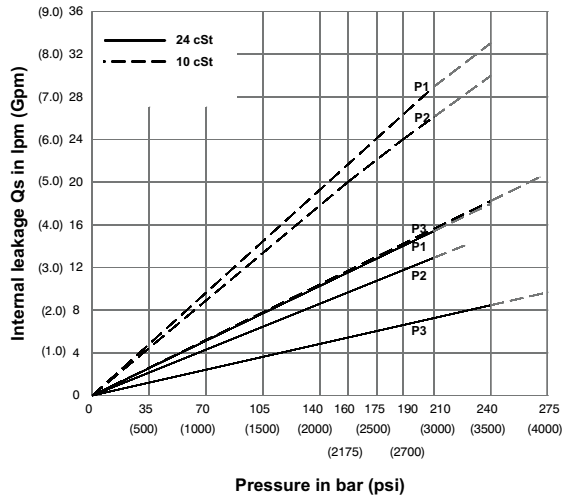


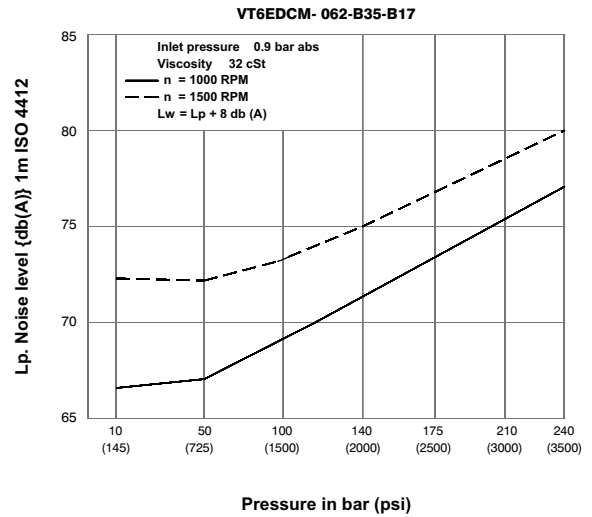


## INTERNAL LEAKAGE (TYPICAL)



Total leakage is the sum of each section loss at its operating conditions.

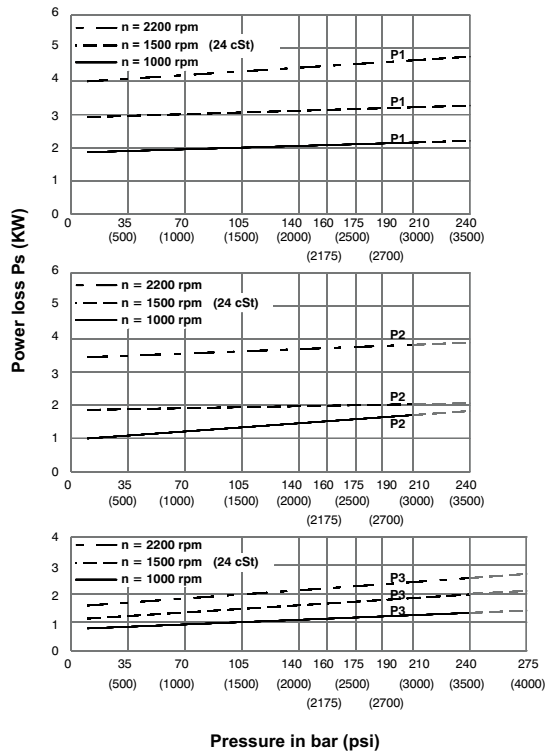
## NOISE LEVEL (TYPICAL)



Triple pump noise level is given with each section discharging at the pressure noted on the curve.

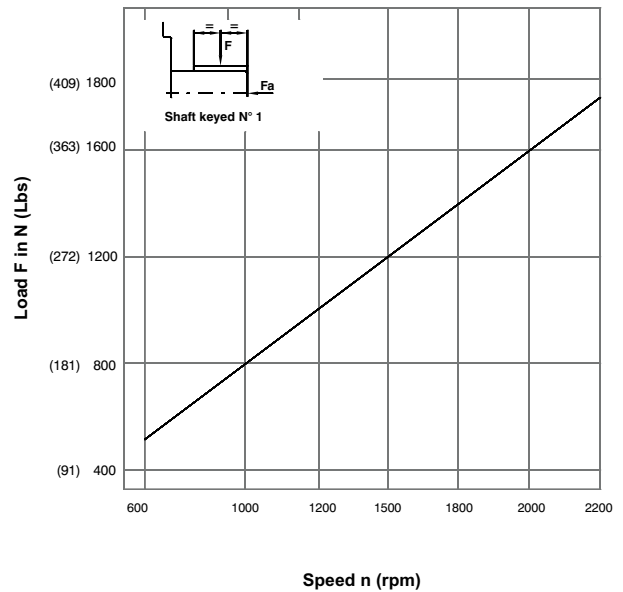
VP  
TP

## HYDROMECHANICAL POWER LOSS (TYPICAL)

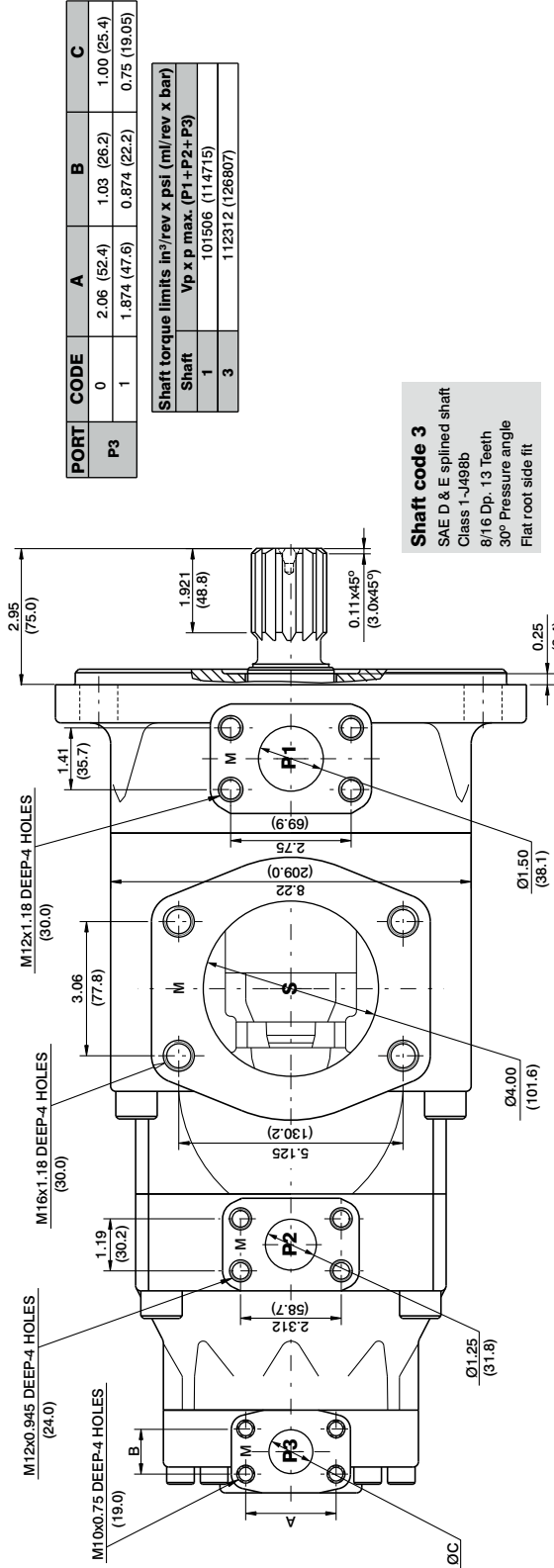


Total hydromechanical power loss is the sum of each section at its operating conditions

## PERMISSIBLE RADIAL LOAD



Maximum axial load permissible  $F_a=2000\text{N}$  (449 lbs)



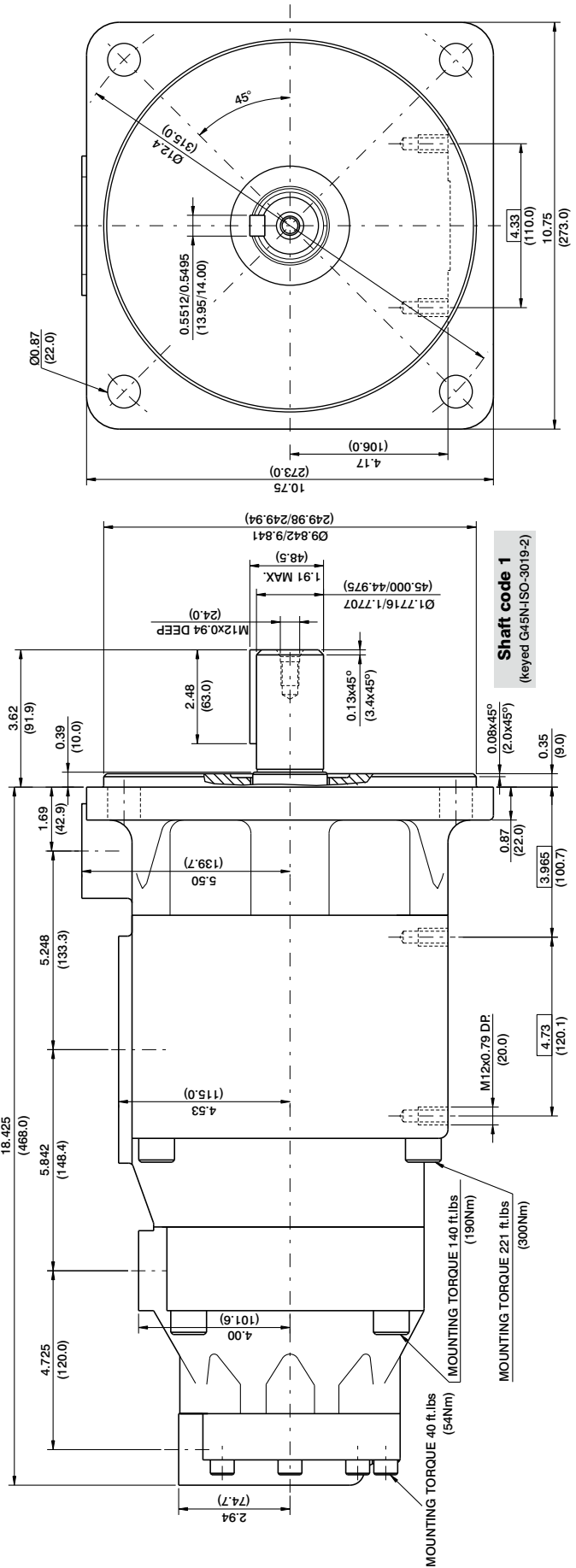
PORT	CODE	A	B	C
	0	2.06 (52.4)	1.03 (26.2)	1.00 (25.4)
P3	1	1.874 (47.6)	0.874 (22.2)	0.75 (19.05)

Shaft torque limits in<sup>3</sup>/rev x psi (ml/rev x bar)

Shaft Vp x p max. (P1 + P2 + P3)	1	3
	101506 (114715)	112312 (126807)

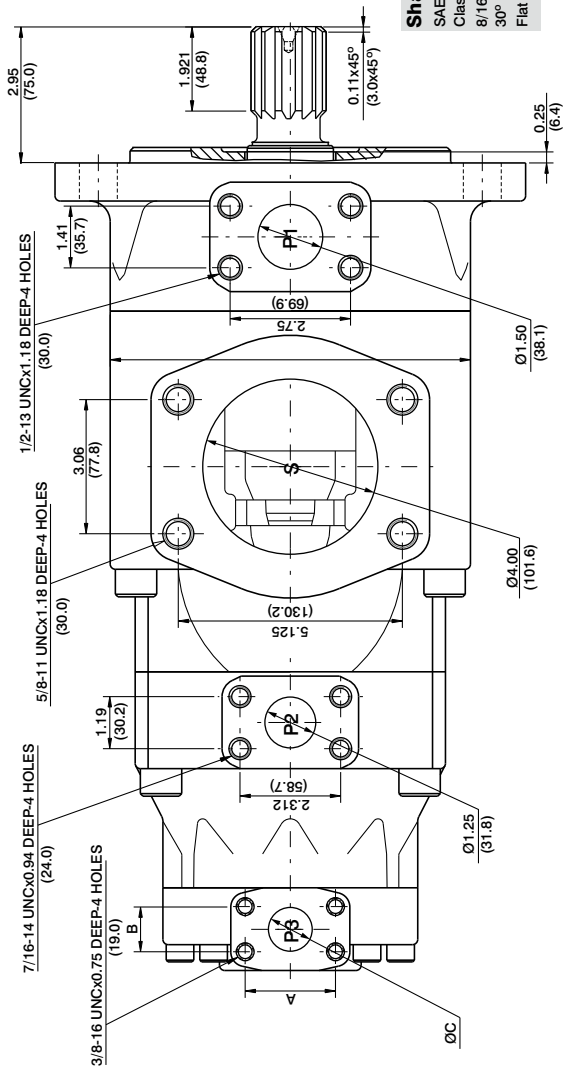
### Shaft code 3

SAE D & E splined shaft  
Class 1-4988b  
8/16 Dp, 13 Teeth  
30° Pressure angle  
Flat root side fit

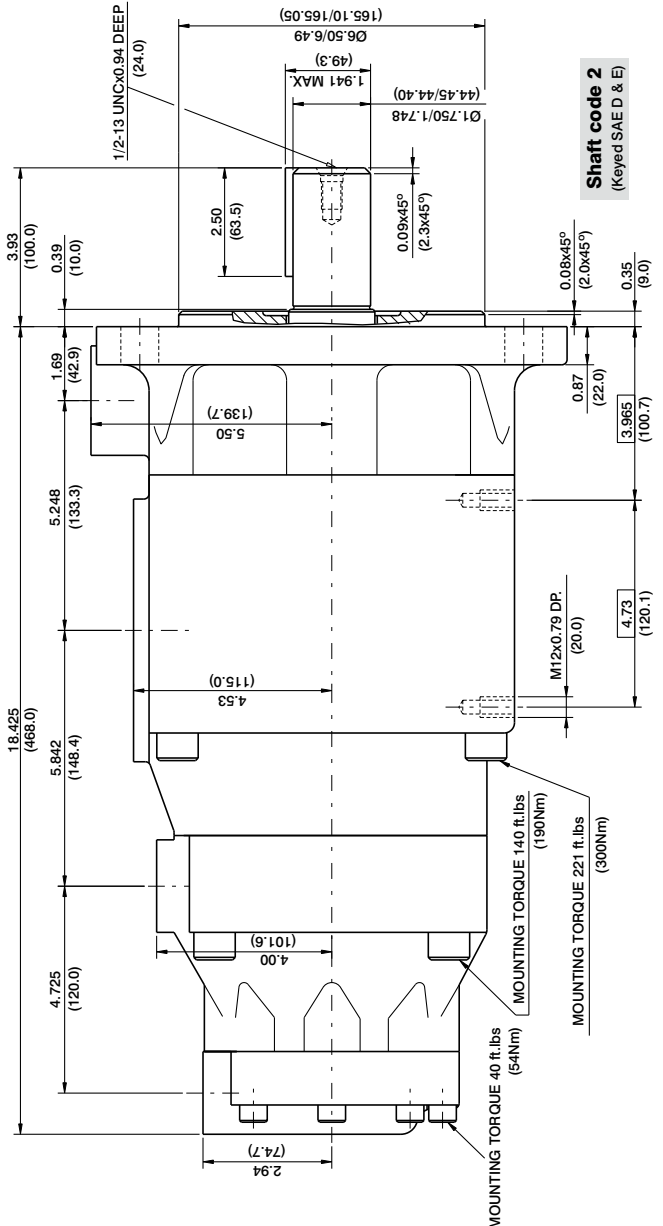
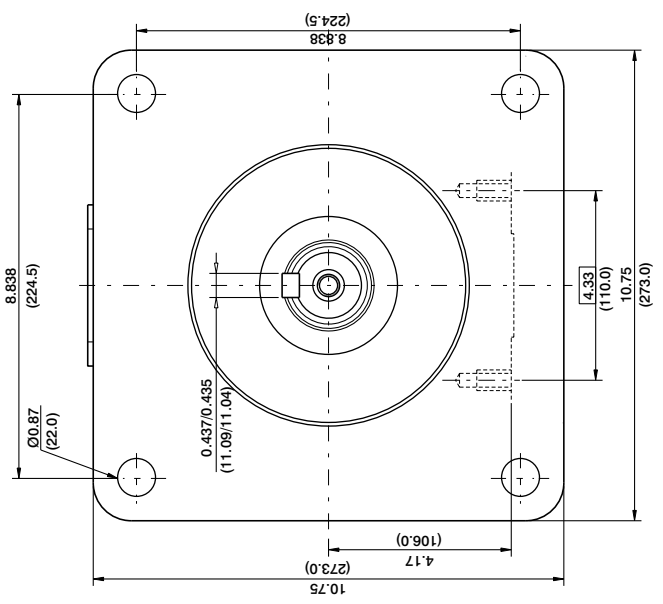


PORT CODE	A	B	C
0	2.06 (52.4)	1.03 (26.2)	1.00 (25.4)
P3	1.874 (47.6)	0.874 (22.2)	0.75 (19.05)

Shaft torque limits in <sup>3</sup> /rev x psi (m <sup>3</sup> /rev x bar)
Vp x p max. (P1+P2+P3)
1 101506 (114715)
2 104818 (118346)
3 112312 (126807)



**Shaft code 3**  
 SAE D & E splined shaft  
 Class 1-4988b  
 8/16 Dp. 13 teeth  
 30° Pressure angle  
 Flat root side fit



**Shaft code 2**  
 (Keyed SAE D & E)

Note: Product details are liable to change without any notice