

## SERIES : 554



## FEATURES:

- Multipurpose 3 port 2 position valve with 1/8" port for use as NC, NO, diverter or selector function.
- Aluminum alloy body with balanced spool construction.
- Adequate for small cylinders and pilot signals.
- Available in plug-in options for use with plug-in fittings.
- Variety of mounting options with interchangeable actuators to meet customer requirements.



## Basic Valve

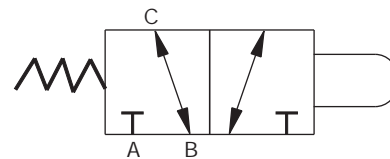
The versatile design of the above Mini valve allows it to directly replace electrical limit switches, enabling to make your system 100% air controlled. The valve is able to endure harsh, dirty, humid environments that would destroy electrical switches. Also the hazard of fire or explosion and the need for bulky conduit and enclosures is eliminated.

The basic valve, can be applied as it is or with one of the many different actuating devices shown in page 3 in order to provide the precise actuation desired. These valves are best suited for low flow rate tasks such as automation, robotics, fueling, car wash, chemical and conveyor applications.

## Specifications:

Pressure Range	0-8 bar
Media	Compressed air
Cv	0.11
Flow at 100 PSI	6 SCFM
Ports	1/8" BSP / NPT
Force to Actuate	85 Grams
Max. Ambient Temp.	50°C
Lubrication	Not Required

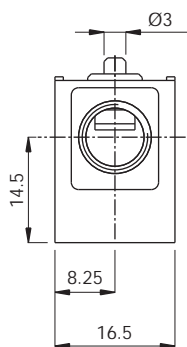
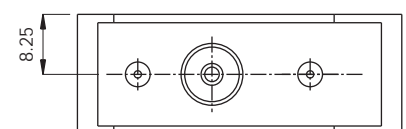
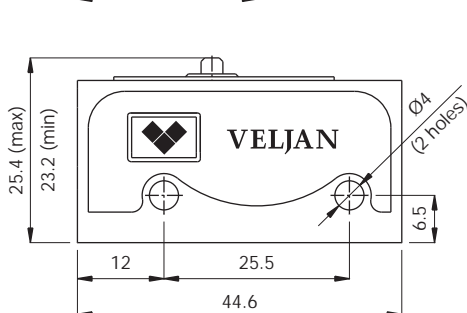
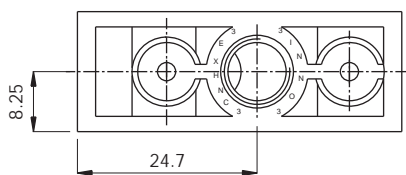
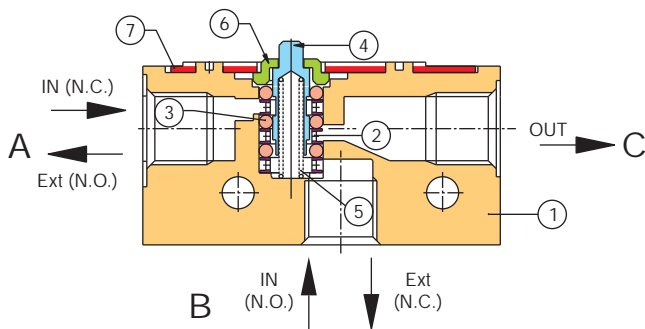
## Flow Diagram



The Mini valve is a 3-Ported, 2-Position multipurpose valve with closed crossover.

The table below lists all the possible valve functions which can be obtained by just changing the way the valve is connected.

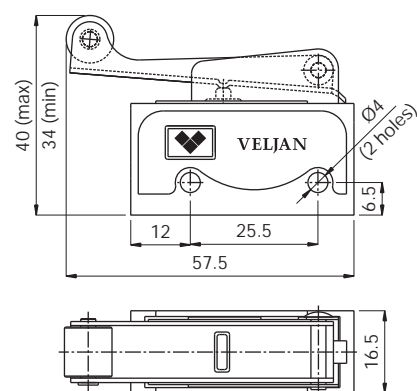
Port	A	B	C
2-Way N.O.	Plug	Inlet	Outlet
2-Way N.C.	Inlet	Plug	Outlet
3-Way N.O.	Exhaust	Inlet	Outlet
3-Way N.C.	Inlet	Exhaust	Outlet
<b>Diverter</b>	Outlet	Outlet	Inlet
<b>Selector</b>	Inlet	Inlet	Outlet



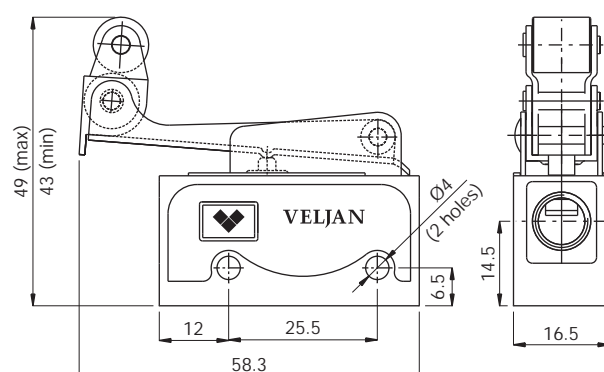
## Material Identification:

S.no.	Description	Material
1	Valve body	Aluminum
2	Sleeve	Acetar resin
3	'O' Ring	Viton rubber
4	Spool	Teflon
5	Spring	Spring steel
6	Spacer	Aluminum
7	Top cover	C.R.C.S.

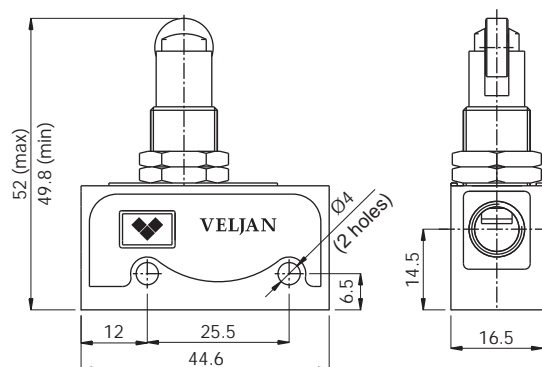
## 1. ROLLER LEVER OPERATED



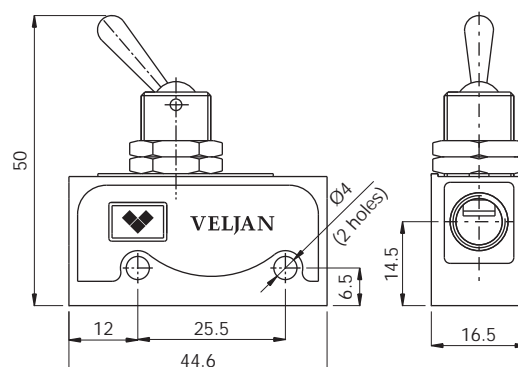
## 2. ONE WAY LEVER OPERATED



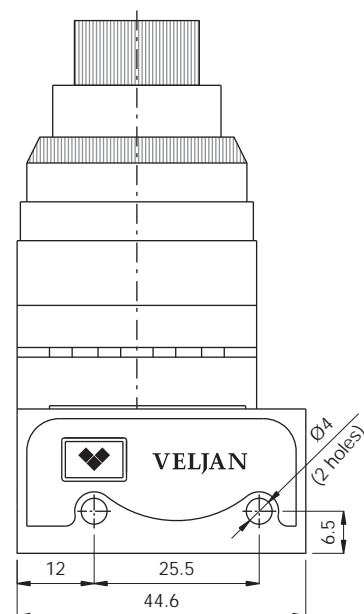
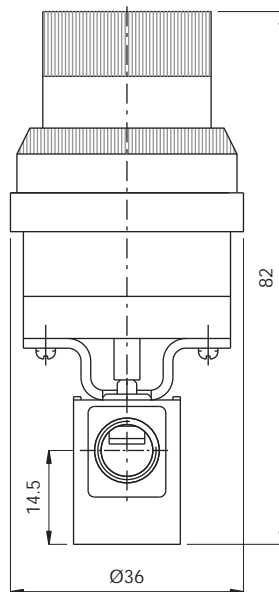
## 3. ROLLER PLUNGER OPERATED



## 4. TOGGLE SWITCH OPERATED



5. SELECTOR SWITCH



ORDERING CODE

