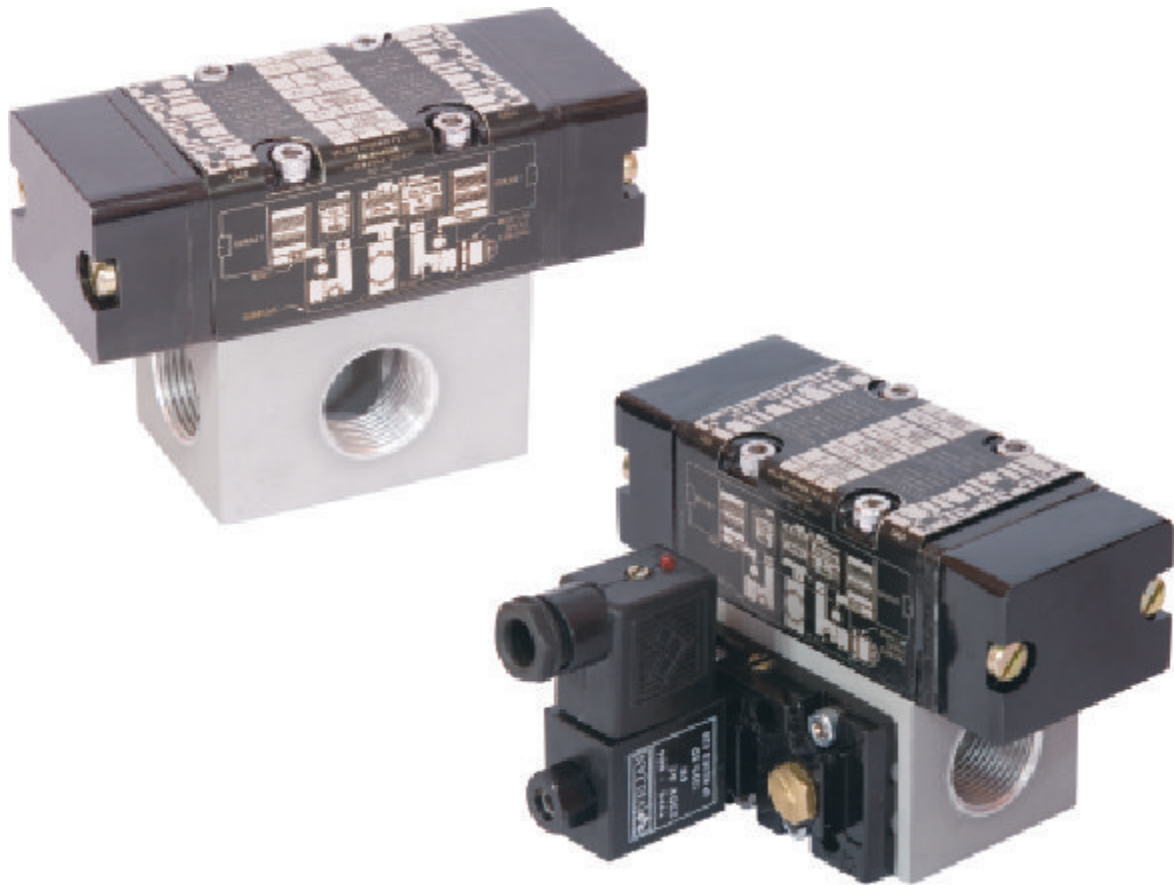


SERIES : 310

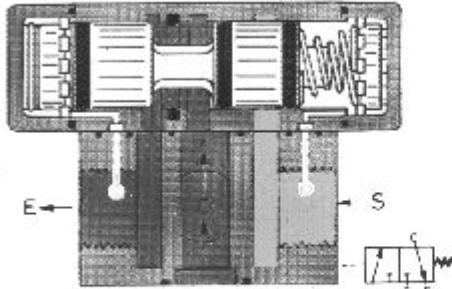


#### FEATURES:

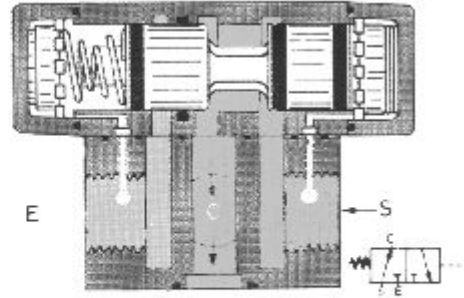
- Suitable for Large bore Cylinders. (80 mm to 500 mm dia)
- Available different sizes from 3/8" to 1 1/4".
- Exclusive advantage and unmatched reliability-plus low cost.
- Corrosion resistant Aluminum die cast bodies.
- Hard surface coated Aluminum spool..
- Nitrile seals provide excellent sealing.
- Direct to cylinder port mounting results maximum power to the cylinder.
- Useful for high speed operations.
- Common body for different sub plate sizes

## OPERATIONAL ARRANGEMENTS

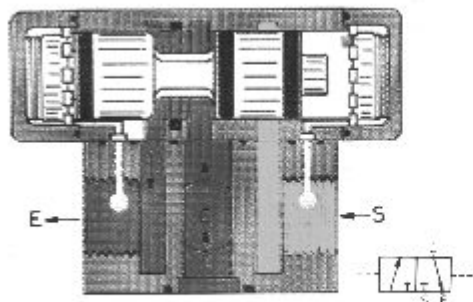
Four operational arrangements are available including a unique 3 position, spring centered all ports blocked mid position.



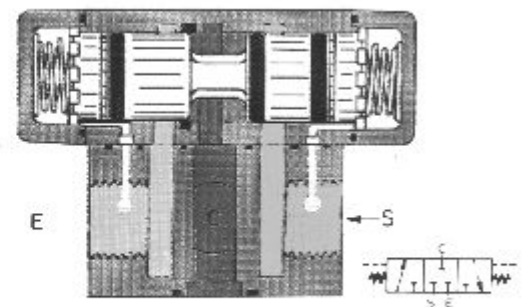
2 Position spring return  
Normally closed  
(one spring stored other spring active)



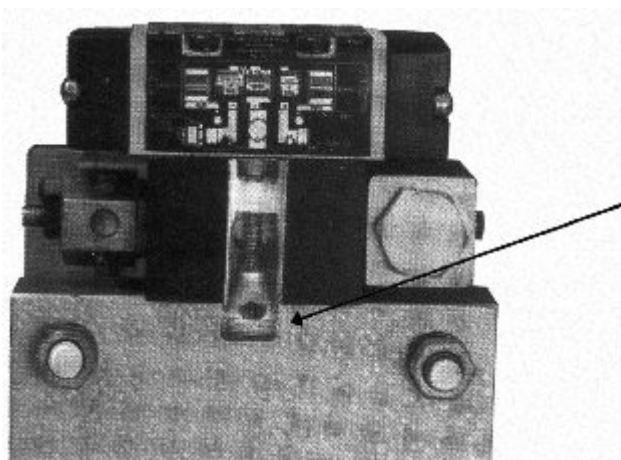
2 Position spring return  
Normally open  
(one spring stored, other spring active)



2 Position momentary  
Impulse  
(both springs stored)

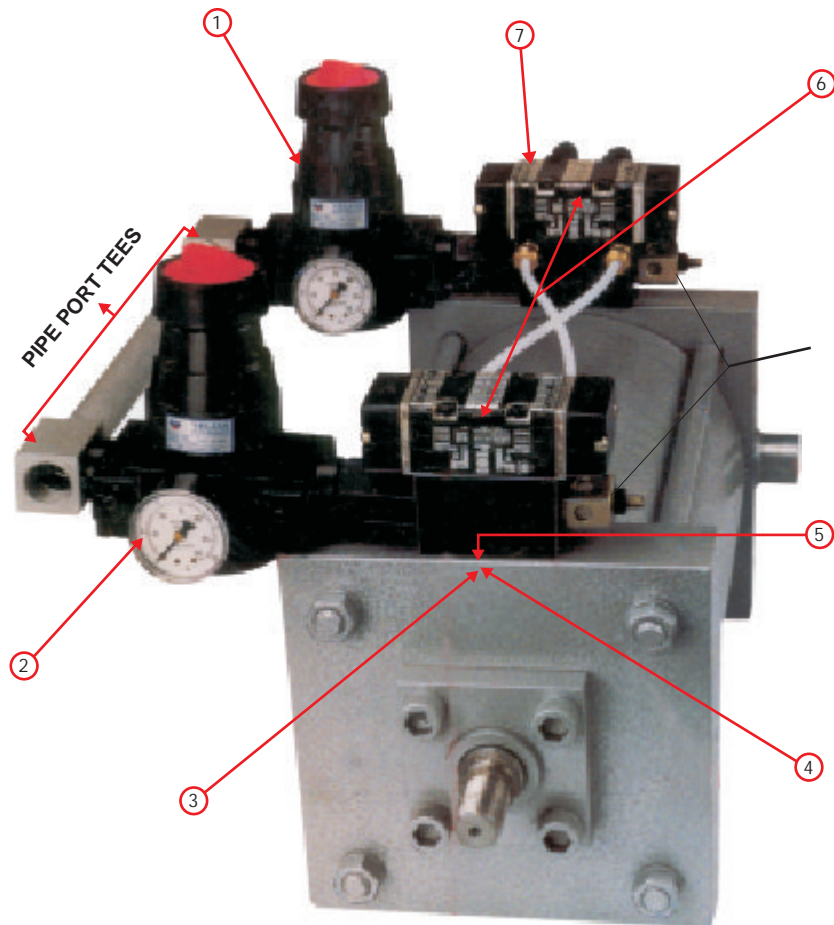


3 Position spring centered  
All ports blocked  
(both springs active)



## HOW THE VELJAN PIPE PORT NUT SIMPLIFIES VALVE- CYLINDER ASSEMBLY AND SERVICING

A simple, fool proof device the pipe port nut-make it easy to mount the No. 310 valve directly to the cylinder port. The pipe port nut, which has multiple openings for full air flow, is fully threaded in to cylinder port. The subplate is positioned over the nut and securely flush mounted to the cylinder port by threading a socket head cap screw into the nut. An "o" ring seal in the base of the subplate seals the flush mounted assembly. the assembly is completed by mounting the valve body to the subplate.



**PRESSURE REGULATOR**  
For forward cylinder stroke

**PRESSURE REGULATOR**  
For return cylinder stroke

#### SAVE ON PIPING AND AIR

Air savings, less piping, quicker piping, fewer, less expensive fittings-because port mounting of valves eliminates airfilled piping and threaded unions between valves and cylinders.

#### EASY MOUNTING AND CYLINDER REMOVAL

No port modifications or cylinder head drilling required. subplate securely flush-mounted to any standard cylinder port by pipe port nut that permits full, unrestricted air flow and removal of cylinder for servicing and replacement without disturbing piping.

#### FASTER SPEEDS

Increased cylinder speeds, maximum power, and better control achieved easily and inexpensively by port mounting of valves, which provides much faster supply and exhaust of air through valves and cylinders.

#### VARIABLE SPEED CONTROL

in both direction of cylinder stroke and quiet operation provide by speed control muffler in each 3 way valve

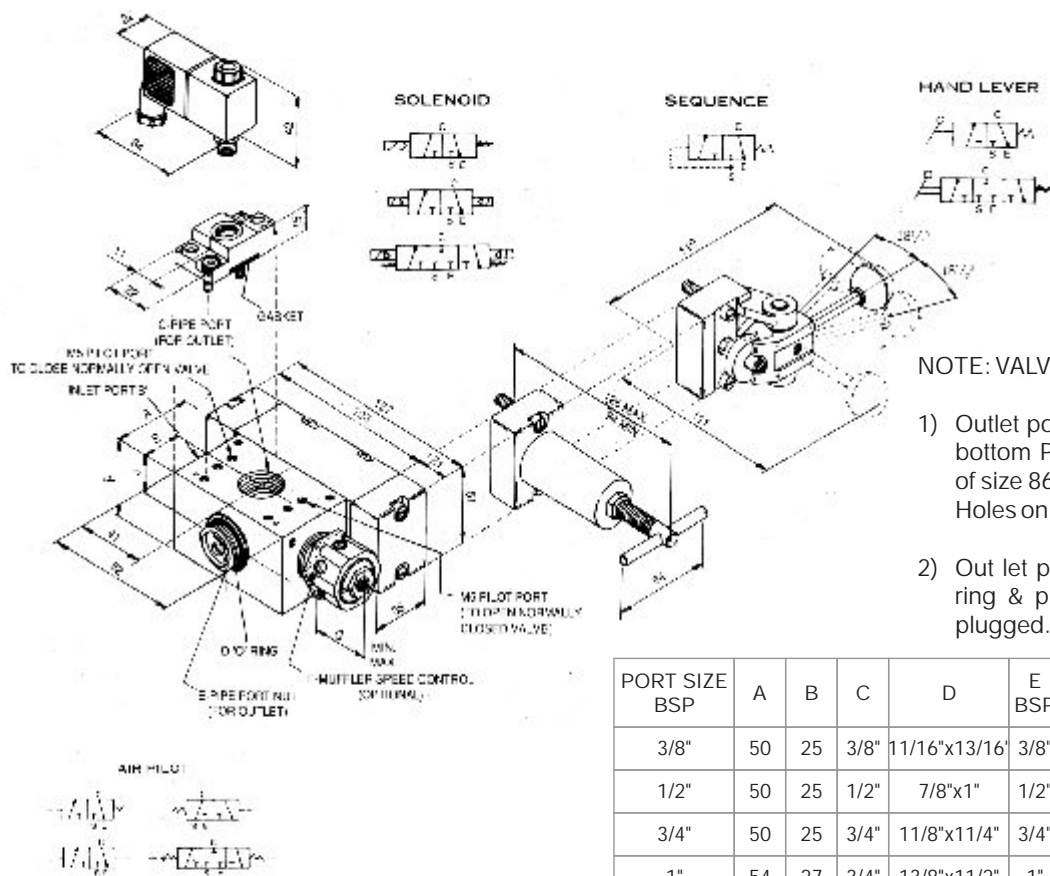
#### SAVE ON AIR

two veljan 3-way valves (mass produced at less cost than most 4-way valves) allow use of regulator at each cylinder port, thus permitting use of exat pressure for cylinder work stroke and greatly reduced air pressure on return stroke.

#### SAVE ON SERVICING

Valve body containing all wearing valve parts easily removed, serviced, and replaced without disturbing piping or wiring-because only the (non-wearing) valve subplate connects to piping. Plug-in type solenoid removed, serviced and replaced with out disturbing piping or wiring.

# 310 VALVE BODY & SUBPLATE WITH INTERCHANGEABLE OPERATORS



PORT SIZE BSP	A	B	C	D	E BSP	F BSP	G		H	J
							MIN	MAX		
3/8"	50	25	3/8"	11/16"x13/16"	3/8"	3/8"	26	36	51	25.5
1/2"	50	25	1/2"	7/8"x1"	1/2"	1/2"	29	46	51	25.5
3/4"	50	25	3/4"	11/8"x11/4"	3/4"	3/4"	37	54	51	25.5
1"	54	27	3/4"	13/8"x11/2"	1"	1"	40	53	62	31
1 1/4"	54	27	3/4"	13/4"x 17/8"	1 1/4"	1 1/4"	53	67	62	31

## ORDERING CODE

310	1	01	1	0	04
-----	---	----	---	---	----

**SERIES**

310

1- Bottom ported  
2- Side ported

**TYPE OF OPERATION**

01	Single solenoid
04	Double solenoid
05	Double pilot
07	Single pilot
13	Hand lever
18	Sequence
99	Special

**SIZE**

2	3/8" BSP
3	1/2" BSP
4	3/4" BSP
5	1" BSP
6	1 1/4" BSP
9	Special

**SOLENOID**

1	Normally closed
2	Normally opened
3	Spring centred (Mid position all ports blocked)

**SEQUENCE**

0	No solenoid
1	230 V AC
2	110 V DC
3	110 V AC
4	24 V DC
5	48 V DC
9	Special

Ex : 310/1/01/1/0/04

Note: For specials indicate full details in text after code number.