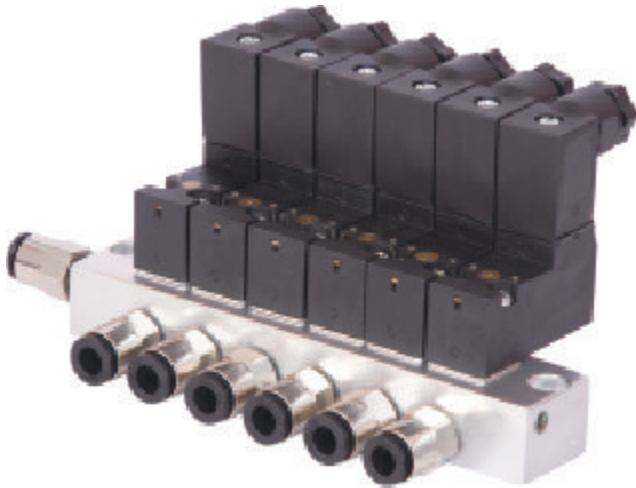


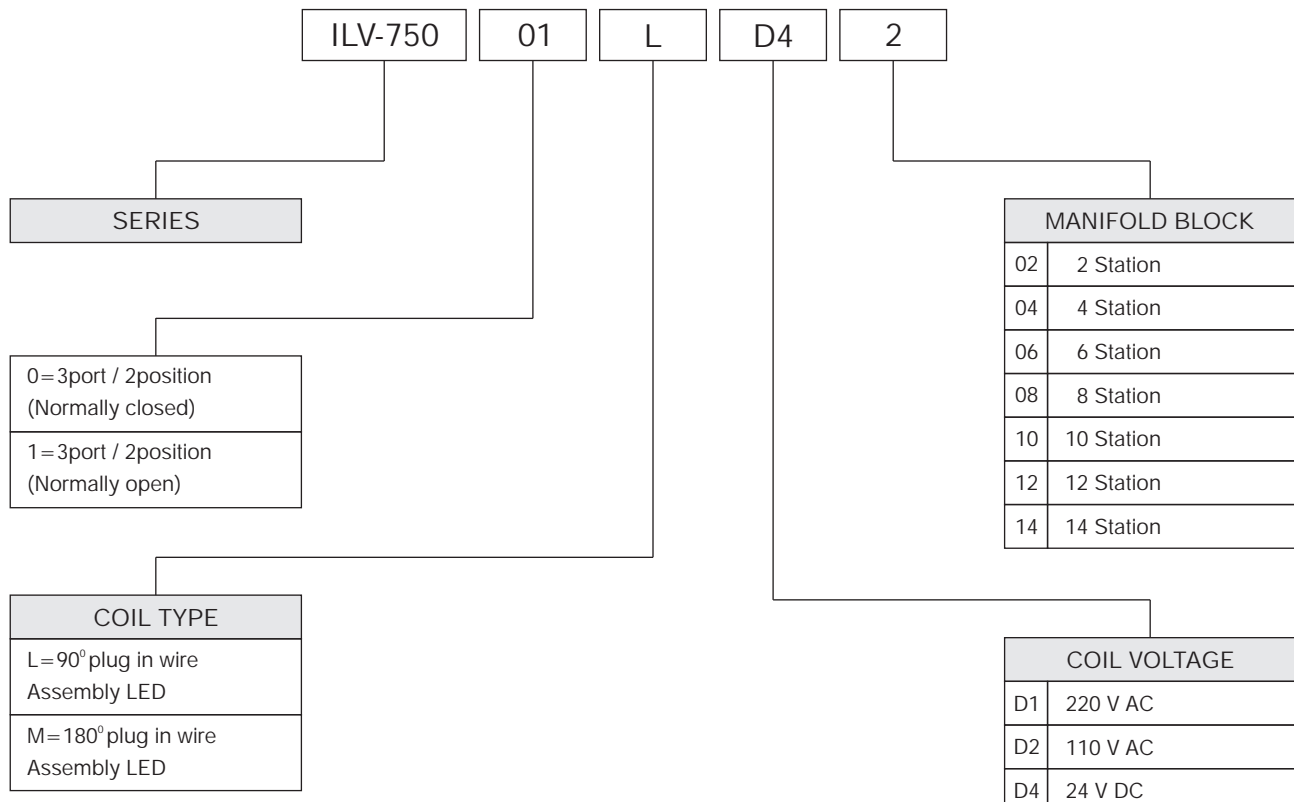
SERIES : 750

Direct Solenoid Actuated Multiple Units Manifold Mounted:

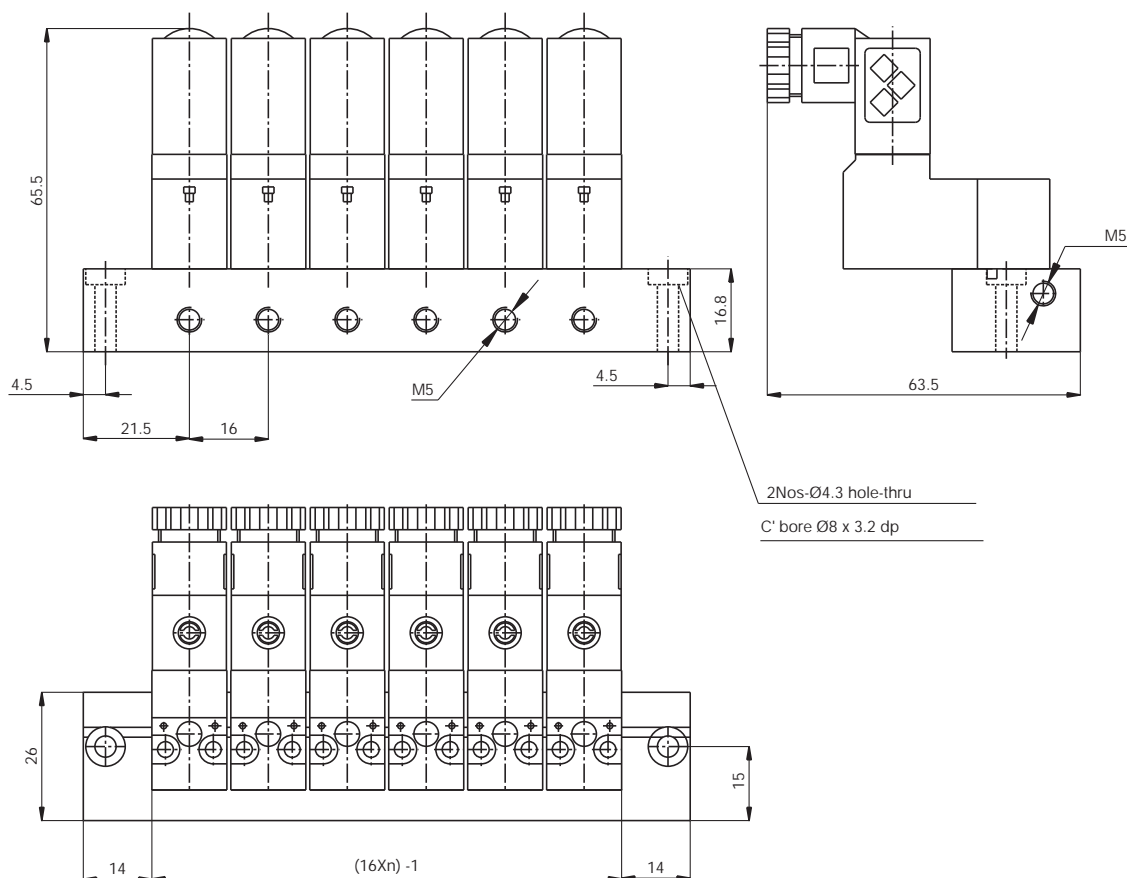


Specifications :	
Series	ILV-750
Port Size	M5
Operation	Direct solenoid actuated
Function	3/2 (3 port 2position)
Medium	Compressed, Filtered air
Min Working Pressure	1.5 bar
Response Time	20 ms
Orifice Size	1 mm
Max Working Pressure	0-10 bar
Operating Temp.	5 to 60°C
Lubrication	Not required
Manual Override	Push Button (In Built Coil)
Coil Insulation	Class - F
Voltage	Ac: 220v or 110v / Dc: 24v
Power Consumption	Ac : 3VA Dc : 2.5w
Permissible Voltage Variation	± 10 % of Rated Voltage
Protection Structure	Dust proof

ORDERING CODE



DIRECT SOLENOID ACTUATED MULTIPLE UNITS MANIFOLD MOUNTED:



SOLENOID DETAILS

