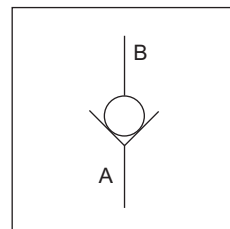


Veljan Inline Check Valves are available in three basic sizes, viz 03 (3/8"), 06 (3/4"), and 10 (1 1/4"). The sizes can be extended with the help of fittings according to a dimensional table. These zero leak valves are suitable for mounting inline with piping. Series VIC check valves are of poppet design and superior - both in design and function even at high flow conditions. These are threaded type available for maximum operating pressure up to 4500 psi (315 bar) and maximum flow up to 105 gpm (400 lpm).



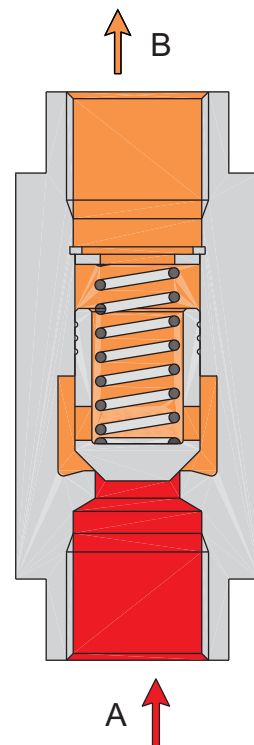
## SPECIFICATIONS

### General

Type	:	Inline Check valve
Design	:	Poppet type
Type of mounting	:	Inline threaded mounting
Port sizes (nominal)	:	3/8", 3/4", 1 1/4"
Direction of flow	:	A → B
Ambient temperature	:	-20° C... +60° C (-4° F... +140° F)
Special working conditions	:	Consult VELJAN

### Hydraulics

Operating Pressure range	:	Minimum - 0 psi (0 bar) Maximum - 4500 psi (315 bar)
Cracking pressure	:	4.5 psi (0.3 bar)
	:	VIC 03 (3/8")    VIC 06 (3/4")    VIC 10 (1 1/4")
Maximum flow gpm (lpm)	:	13 (50)                      53 (200)                      105 (400)
Nominal flow gpm (lpm)	:	8 (30)                        30 (115)                      68 (260)
Fluid	:	Mineral oil as per DIN 51524/25 or other fluids on request
Fluid Temperature Range	:	-18° C... +80° C (0° F... +176° F)
Viscosity recommended	:	30 cSt (180 SSU)



## ORDERING CODE

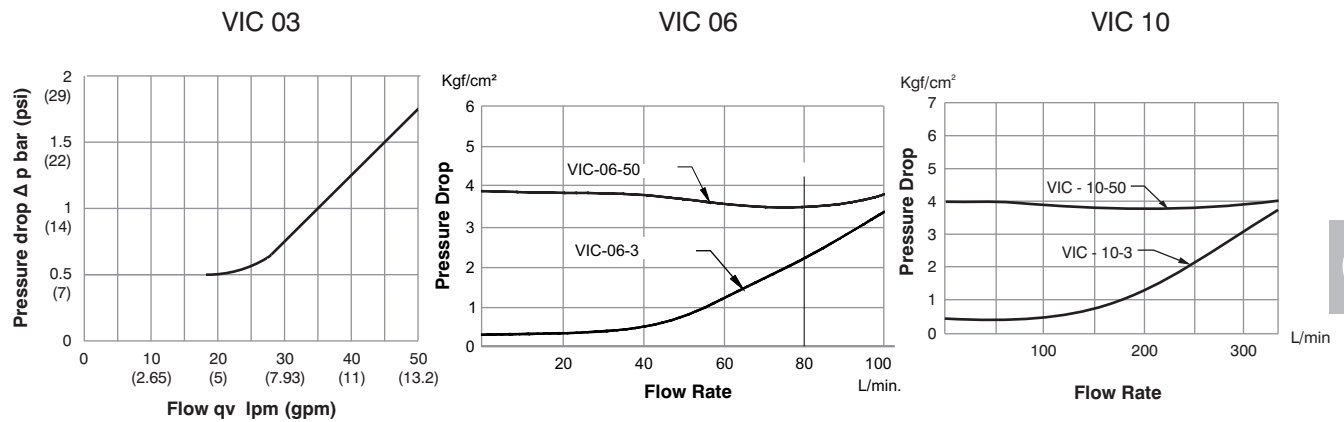
<b>Series</b>	<b>VIC 03 - B04 3 - A 1</b>	<b>Standard</b>
In line check valve		
<b>Size</b>		<b>Design letter</b>
03 = 3/8" Size		<b>Cracking pressure</b>
06 = 3/4" Size		0 = No Spring
10 = 1 1/4" Size		3 = 0.3 bar Spring
<b>Thread connections</b>		30 = 3 bar (Only IC10 & 06)
(For 03 size)	(For 06 size)	(For 10 size)
B01 = 1/4" B.S.P. <sup>2)</sup>	B04 = 1/2" B.S.P. <sup>2)</sup>	B10 = 1 1/4" B.S.P. <sup>2)</sup>
B02 = 3/8" B.S.P. <sup>2)</sup>	B06 = 3/4" B.S.P. <sup>2)</sup>	B12 = 1 1/2" B.S.P. <sup>1)</sup>
B04 = 1/2" B.S.P. <sup>1)</sup>	B08 = 1" B.S.P. <sup>1)</sup>	
		50 = 5 bar (Only IC10 & 06)

<sup>1)</sup> - Basic size    <sup>2)</sup> - With reducer fittings.

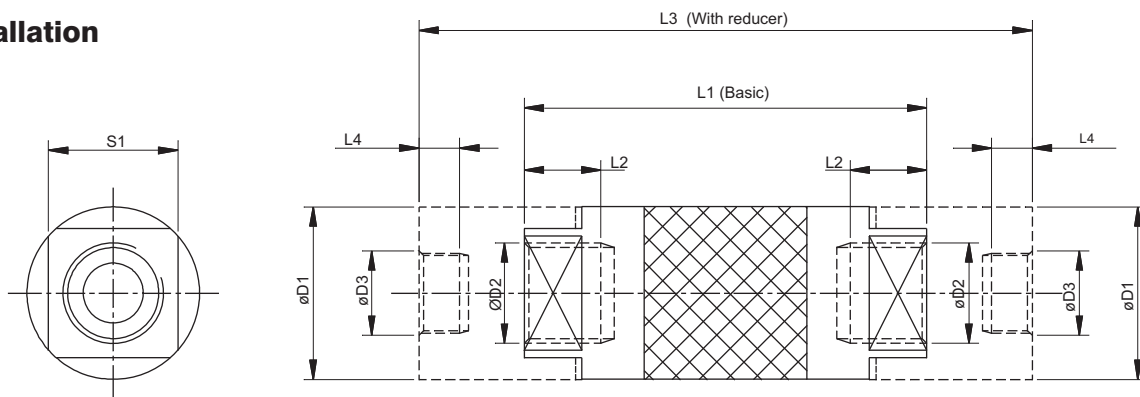
## $\Delta p$ - $q_v$ - Characteristics

(Fluid 60 cSt at 40°C

Test temp. 50°C  $\pm$  10%)



## Installation



Size		L1	L2	L3	L4	øD1	øD2	øD3	S1	Weight
03 - Basic	inch	3.3	0.63	-	-	1.42	1/2" BSP	-	1.07 A/F	1.09 lbs
	mm	84.0	16.0	-	-	36.0		-	27 A/F	0.5 kg
03 - With 3/8" BSP REDUCERS	inch	-	-	4.72	0.33	1.41	3/8" BSP	-	1.07 A/F	1.53 lbs
	mm	-	-	120.0	8.5	36.0		-	27 A/F	0.7 kg
03 - With 1/4" BSP REDUCERS	inch	-	-	4.25	0.33	1.41	1/4" BSP	-	1.07 A/F	1.32 lbs
	mm	-	-	108.0	8.5	36.0		-	27 A/F	0.6 kg
06 - Basic	inch	4.33	0.708	-	-	2.0	1" BSP	-	1.73 A/F	3.07 lbs
	mm	110.0	18.0	-	-	50.8		-	44 A/F	1.4 kg
06 - With 3/4" BSP REDUCERS	inch	-	-	6.93	0.51	2.0	3/4" BSP	-	1.73 A/F	5.05 lbs
	mm	-	-	176.0	13.0	50.8		-	44 A/F	2.3 kg
06 - With 1/2" BSP REDUCERS	inch	-	-	5.51	0.41	2.0	1/2" BSP	-	1.73 A/F	3.95 lbs
	mm	-	-	140.0	10.5	50.8		-	44 A/F	1.8 kg
10 - Basic	inch	5.31	0.86	-	-	2.62	1 1/2" BSP	-	2.36 A/F	6.59 lbs
	mm	135.0	22.0	-	-	66.7		-	60 A/F	3.0 kg
10 - With 1 1/4" BSP REDUCERS	inch	-	-	8.34	0.787	2.62	1 1/4" BSP	-	2.36 A/F	9.89 lbs
	mm	-	-	212.0	20.0	66.7		-	60 A/F	4.5 kg